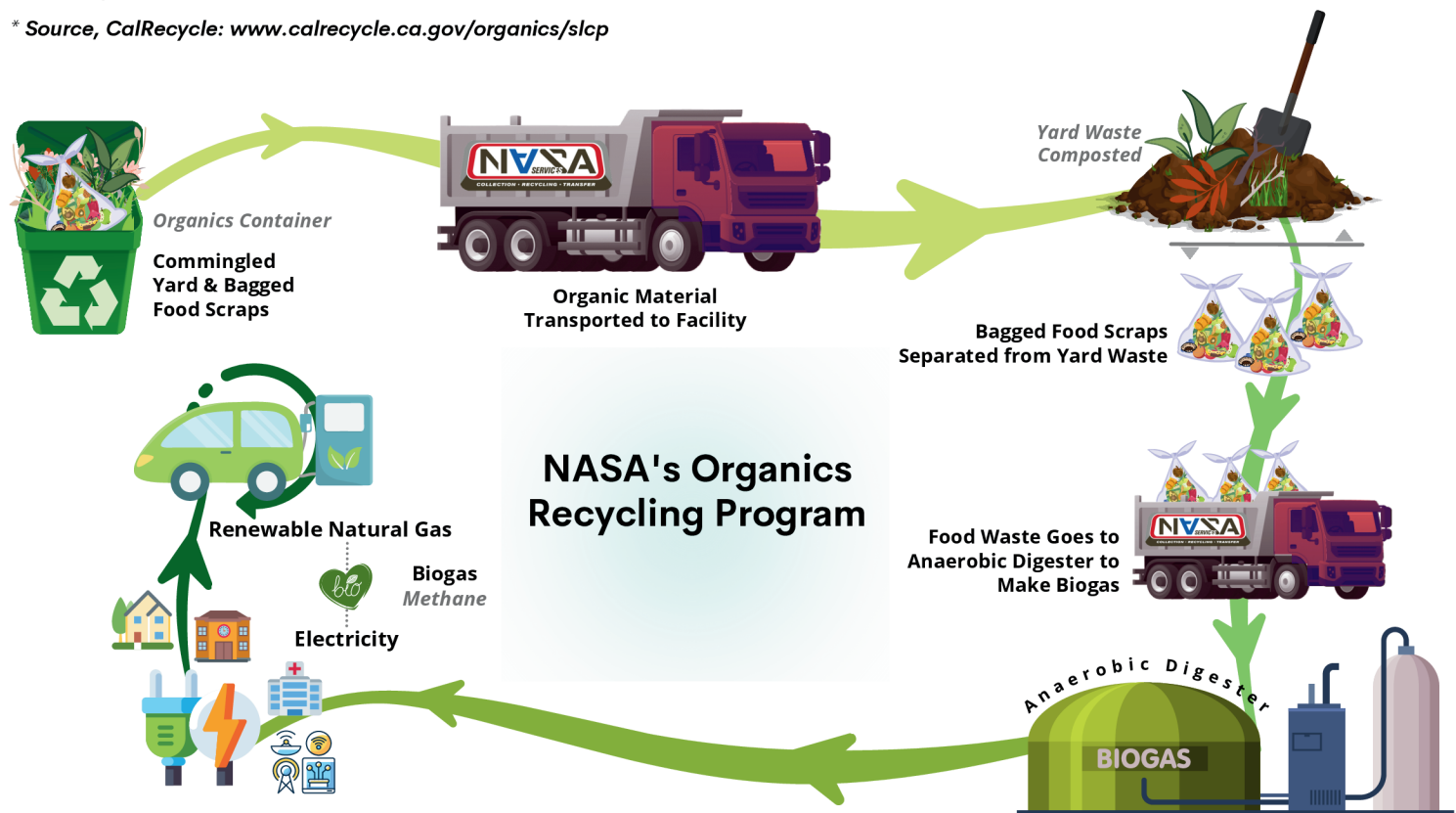


New Senate Bill 1383 (SB 1383) regulations went into effect on January 1, 2022. This law requires jurisdictions to establish organics recycling services for all residents and businesses, including multi-family complexes.

SB 1383 aims to reduce statewide organic waste disposal by 75% by 2025. When disposed in landfills, organic waste emits:

- 20% of California's methane, a climate super pollutant 84 times more potent than carbon dioxide
- Air pollutants like PM 2.5, which contributes to health conditions like asthma.*

* Source, CalRecycle: www.calrecycle.ca.gov/organics/slcp



Subscribe to Recycling & Organics Services

All businesses, multi-family complexes, and residents **MUST** participate in the established program by subscribing to services for Black, Blue, and Green containers and by separating materials as shown below:

What goes into **BLACK:** Trash



What goes into **BLUE:** Recyclables



What goes into **GREEN:** Food Scraps



*Yard trimmings bin available for any grass, weeds, leaves, flowers & small branches

- Chip bags, Diapers, Disposable gloves & masks
- Pet waste, Plastic bags, Plastics #3, #4, #6, & #7
- Foam containers & other plastic to-go food packaging

- Cardboard, paper, newspaper
- Clean & dry metal containers & products
- Glass bottles & containers
- Plastics #1, #2, & #5

- Food scraps and food-soiled paper.
EXCLUDES fats, oils, & grease
- All food **MUST** be put in a clear plastic bag prior to being placed into the Green container

How to Comply

All businesses, property owners, and property managers **MUST**:

- Participate in available programs
- Educate employees & tenants at least one time per year, and new tenants within 14 days of tenancy
- Monitor for proper sorting and take corrective actions when needed
- Color code internal bins and place proper signage
- Offer customers access to separate collection bins

Failure to comply may result in enforcement actions!



Does Your Business Make, Sell, or Distribute Edible Food?

SB 1383 requires certain food businesses to donate the maximum amount of surplus edible food they would otherwise dispose of to food recovery organizations.

Mandated businesses need to enter into a formal agreement with a food recovery organization and track all donations. Contact the LASAN Customer Care Center at 800-773-2489 to be connected to a Zero Waste Representative for any questions or assistance.



Tier 1 Businesses/Organizations were required to begin donating by January 1, 2022. Tier 1 includes:

- Supermarkets
- Grocery Stores of $\geq 10,000$ sq. ft.
- Food Service Providers
- Food Distributors
- Wholesale Food Vendors

Edible Food Must Be Donated

Businesses may not knowingly allow edible food to spoil to avoid donation requirements.

Effective January 1, 2022, the City of Los Angeles commenced monitoring activities to ensure compliance.



Tier 2 Businesses/Organizations must begin donating by January 1, 2024. Tier 2 includes:

- Restaurants with Facilities $\geq 5,000$ sq. ft. or 250+ Seats
- Hotels with an On-Site Food Facility & 200+ Rooms
- Health Facilities with an On-Site Food Facility & 100+ Beds
- Large Venues & Events
- State Agency Cafeterias with Facilities $\geq 5,000$ sq. ft. or 250+ seats
- Local Education Agency with an On-Site Food Facility
- Non-Local Entities



Think Outside the Black Bin!

The easiest, cheapest, and most sustainable way to manage organic waste is to avoid creating it in the first place.

To reduce organic waste at its source:

- Perform a food waste audit to see what food is being wasted & why
- Avoid over purchasing and over preparing
- Serve smaller portion sizes
- Properly store & label food items

For remaining organic waste, consider alternative disposal methods:

- Recycle organic waste on-site through composting or anaerobic digestion systems
- Send organic waste to a local community composting site
- Donate food scraps to a local farm
- Subscribe to NASA's organic waste service. Food scraps are taken to be anaerobically digested & generate energy. Yard trimmings are processed at a mulching facility

We're Here to Support You

We can help you determine if your business is a mandated Tier 1 or Tier 2 Edible Food Generator and provide resources to help you comply with the law.

Visit bit.ly/LACountyFoodDROP. Use **Find a Recycler**, then select **Food Donation** to find an organization to collect food from you.

For more on food donors: bit.ly/CalRecycleFoodDonors



www.recycLA.com • www.NASAreycLA.com • 1-800-773-2489
1100 South Maple Ave., Montebello, CA 90640
7 AM to 5 PM, Monday - Friday • 7 AM to 12 PM, Saturday

